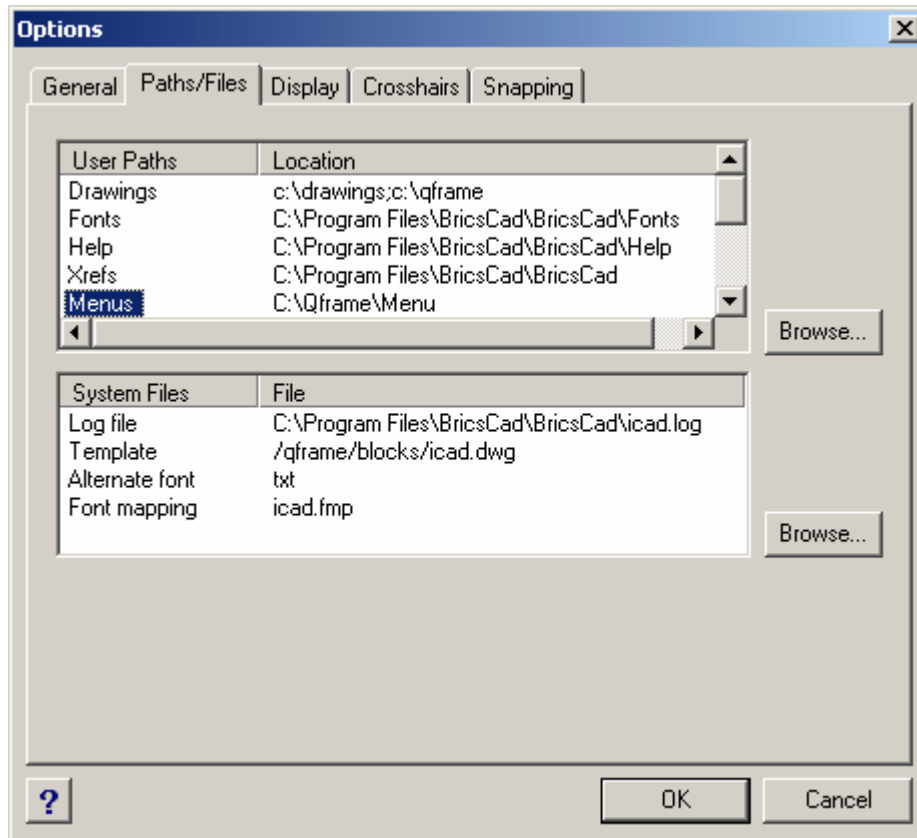


QUIK SERIES SOFTWARE

Steel Detailing Services
Building Design and Documentation
Steel Detailing Software Development

To Reset the Path's

- On the top menu select '*Tools*'
- On the top menu select '*Options*'
- On the '*Options*' dialog box select the '*Paths*' tab on the top.
- In the drawings field the path should read '*C:\Drawings;C:\Qframe;*'
- In the menu field the path should read '*C:\Qframe\Menu*'
- Press '*OK*' to close the dialog box and save settings.
- With these two paths set, Quik Series should now load correctly



ABN 34 336 297 554
122 Salamander Way
Salamander Bay 2317
Phone (61) 249847377
Fax (61) 249820950
Email mail@rcassoc.com.au

